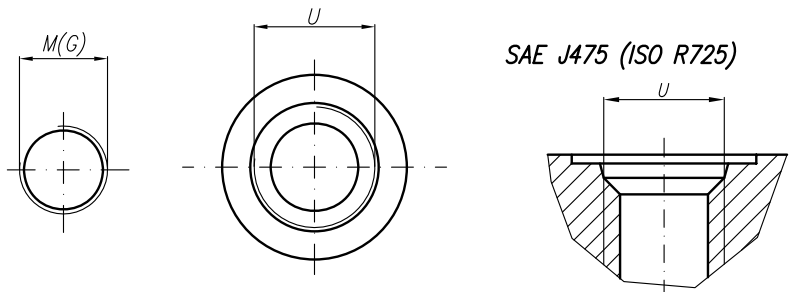


V Variants for ports – M;G;U

Designations:

- ...X206 – Normal version (flanges);
- ...X206M – Metric threads;
- ...X206G – GAS threads;
- ...X206U – SAE threads;



Type	Displacement cm <sup>3</sup> /rev	Flow		Pressure P <sub>nom</sub> bar	max Speed n rpm	Dimension											
		at 1500 rpm l/min	at max rpm l/min			A mm	B mm	Inlet					Outlet				
						E	F	d	M	G	U	E	F	d	M	G	U
20A(C)4,5X206...	4,5	6,14	14,33	250	3500	42,5	80										
20A(C)6,3X206...	6,3	8,69	20,29	250	3500	42,5	80	30,2	13,1	M6-6H	G1/2						
20A(C)8,2X206...	8,2	11,32	26,40	250	3500	42,5	80										
20A(C)10X206...	10	13,95	32,55	250	3500	47	89										
20A(C)11X206...	11,3	15,76	36,78	250	3500	48	91,1										
20A(C)12X206...	12	16,92	39,48	250	3500	48,6	92,3										
20A(C)14X206...	14	19,95	46,55	250	3500	50	95,4										
20A(C)15X206...	15	21,60	36,00	250	2500	51	96,9	39,7	19	M8-6H	G3/4						
20A(C)16X206...	16	23,04	38,40	250	2500	52	98,6										
20A(C)19X206...	19	27,36	45,60	200	2500	54	103,5										
20A(C)22X206...	22	31,68	42,24	180	2000	57	108,5										
20A(C)25X206...	25	36,00	48,00	160	2000	59,2	113,4					39,7	19	M8	M20x1,5	G1/2	7/8"-14UNF